

Installer Database Setup
Oracle FLEXCUBE Universal Banking
Release 14.0.0.0.0
[February] [2018]



Table of Contents

- 1. INSTALLING ORACLE FLEXCUBE DATABASE2
- 1.1 INTRODUCTION2
- 1.2 CREATING SCHEMA BY IMPORTING FULL DUMP2
- 1.3 CREATING SCHEMA FROM SHIPMENT MEDIA2
 - 1.3.1 *Backend Setup using Silent Installer*.....2
 - 1.3.2 *Basic Setup using GUI Installer*3

1. Installing Oracle FLEXCUBE Database

1.1 Introduction

Oracle FLEXCUBE database can be installed in one of the following methods.

- Import full dump – Import the Oracle FLEXCUBE objects into an empty schema using full dump. This is a manual activity.
- From shipment media – Load the shipment media objects into an empty schema using Installer.

These methods are discussed in detail under the following heads.

1.2 Creating Schema by Importing Full Dump

Under this method, you need to manually import the Oracle FLEXCUBE DMP file into the Oracle FLEXCUBE schema. This can be done using the following command:

```
$impdp user_name/password directory=dir_name dumpfile=dmp_file_name.dmp  
logfile=dmp_file_name.log remap_schema=from_schema_name:to_schema_name  
remap_tablespace=from_tablespace_name:to_tablespace_name transform=OID:n
```

1.3 Creating Schema from Shipment Media

Under this method, you need to create the schema from the shipment media.

1.3.1 Backend Setup using Silent Installer

Backend Setup has to be done using Silent Installer. DDL Compilation, Object Compilation and Static Data Load will be taken care as part of Backend Setup.

Before loading objects into the schema, fcubs.properties file creation must be performed with the required database details using the GUI installer (Refer [FCUBS Property File Creation.pdf](#)). After the property file is created, env.properties file, present in INSTALLER/SOURCE/logs/ directory, will be automatically updated, with the details provided while creating the property file.

env.properties file present in INSTALLER/SOFT/GUI/logs/ will be automatically copied to INSTALLER/SOFT/logs/ directory as part of property file creation.

Run the <Product Processor>DBCompileRun.bat from INSTALLER/SOFT directory. DDL Compilation, Object Compilation and Static Data load will be done.

For Example: ROFC INSTALLATION-

First load SMS objects first and then ROFC objects. i.e.

- a. Run SMSDBCompileRun.bat in windows (SMSDBCompileRun.sh in linux)
- b. After SMS object loading is completed, then initiate ROFC compilationRun ROFCDBCompileRun.bat in windows (ROFCDBCompileRun.sh in linux)

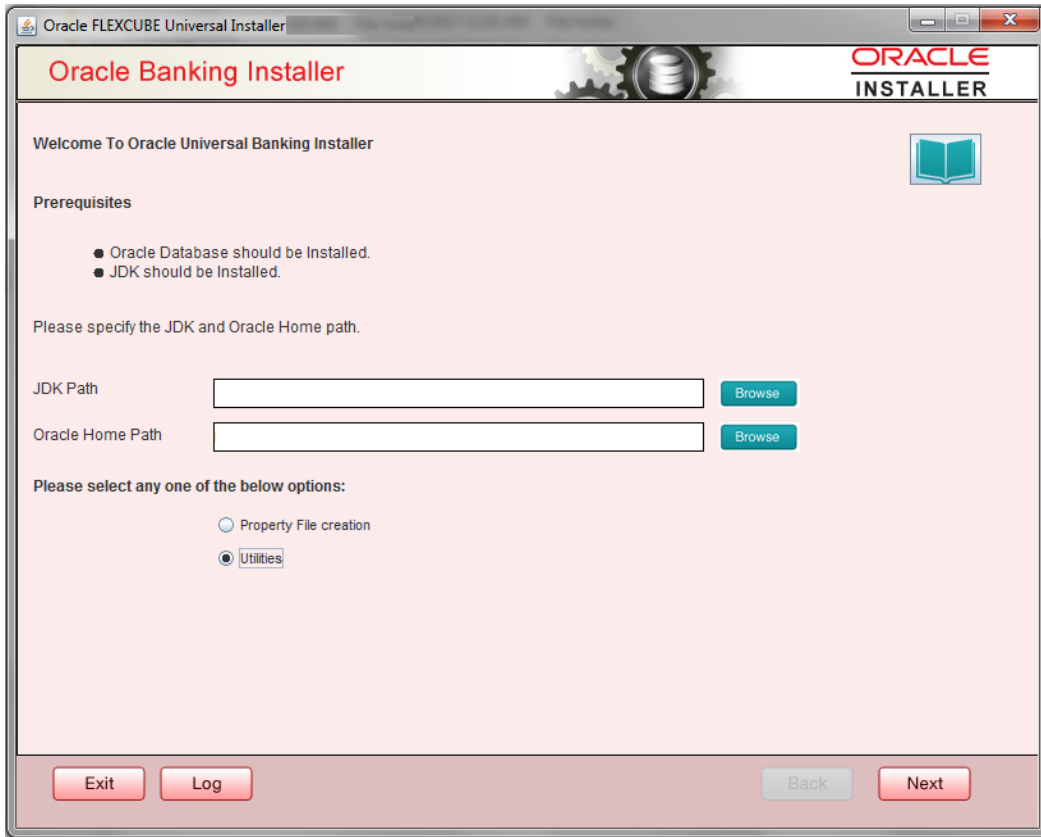
<Product Processor>DBCompileRun.bat – PMDBCompileRun bat (PMDDBCompileRun sh) for Payments, ROFCDBCompileRun bat (ROFCDBCompileRun .sh) for ROFC, POJOLoadRun bat (POJOLoadRun sh) for POJO Compilation and so on.

Check for the Invalid Count and make sure that the Invalid count is '0'.

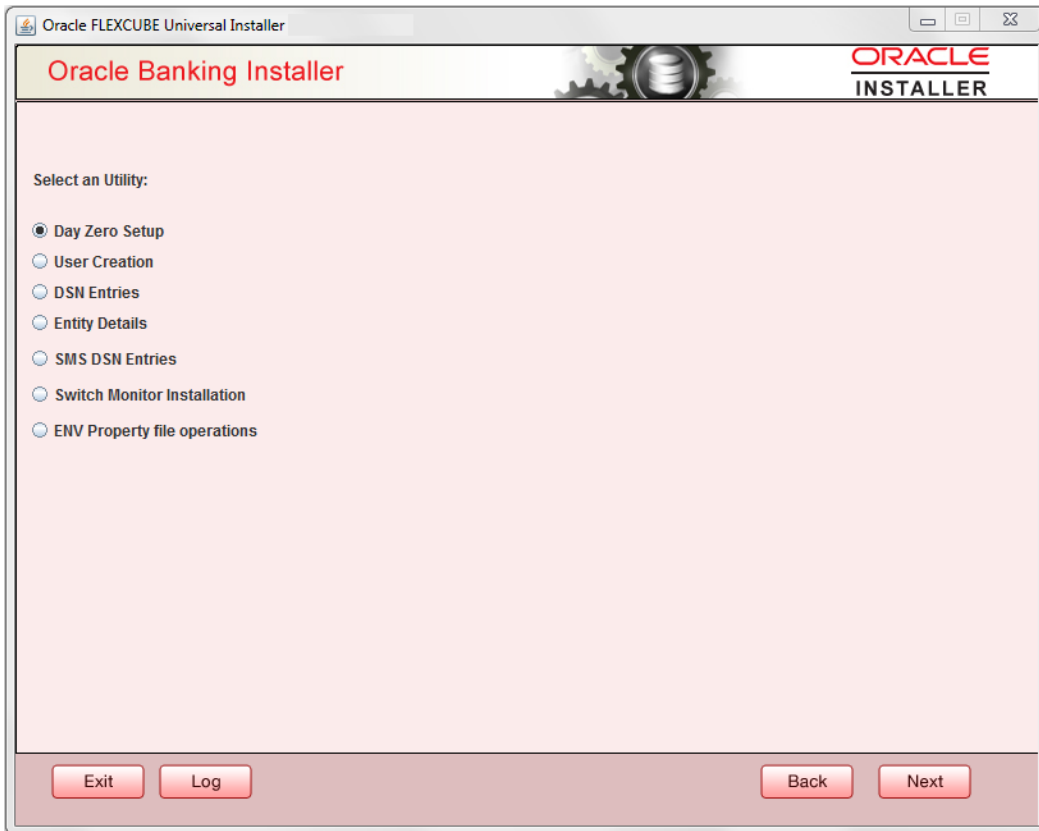
1.3.2 Basic Setup using GUI Installer

The steps to load objects from the shipment media are given below:

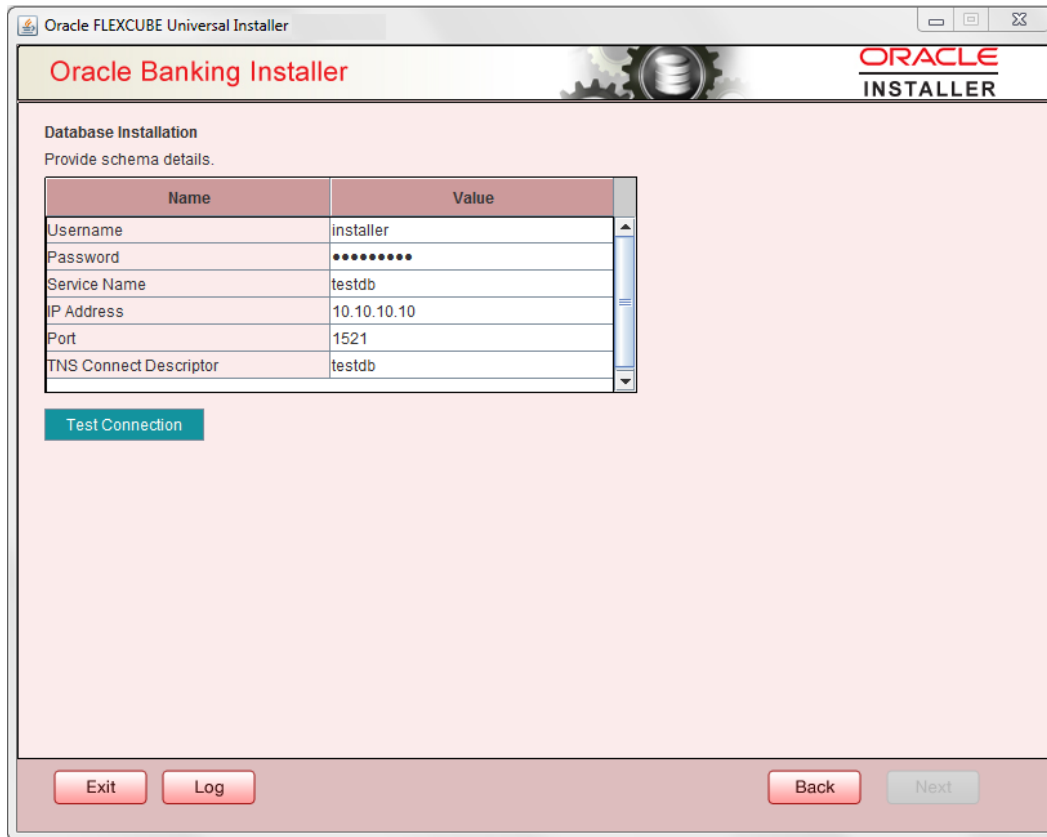
1. Double-click 'FCUBSInstaller.bat' batch file to launch Oracle FLEXCUBE Universal Installer. The following screen is displayed. Select Utilities option and click 'Next' button.



2. Select 'Day Zero Setup' in Utility Screen and click Next as shown below



3. Click 'Next' and in the below screen ROFC Schema details to be entered is displayed:



Specify the following schema details:

User Name

Specify the user name to access the schema.

Password

Enter the schema password.

Service Name

Provide service name of database.

IP Address

Specify the IP address of the system where the database schema is installed.

Note: IP Address should be same as mentioned in the TNSnames.ora

Port

Specify the port number.

TNS Connect Descriptor

Specify the TNS Connect Descriptor.

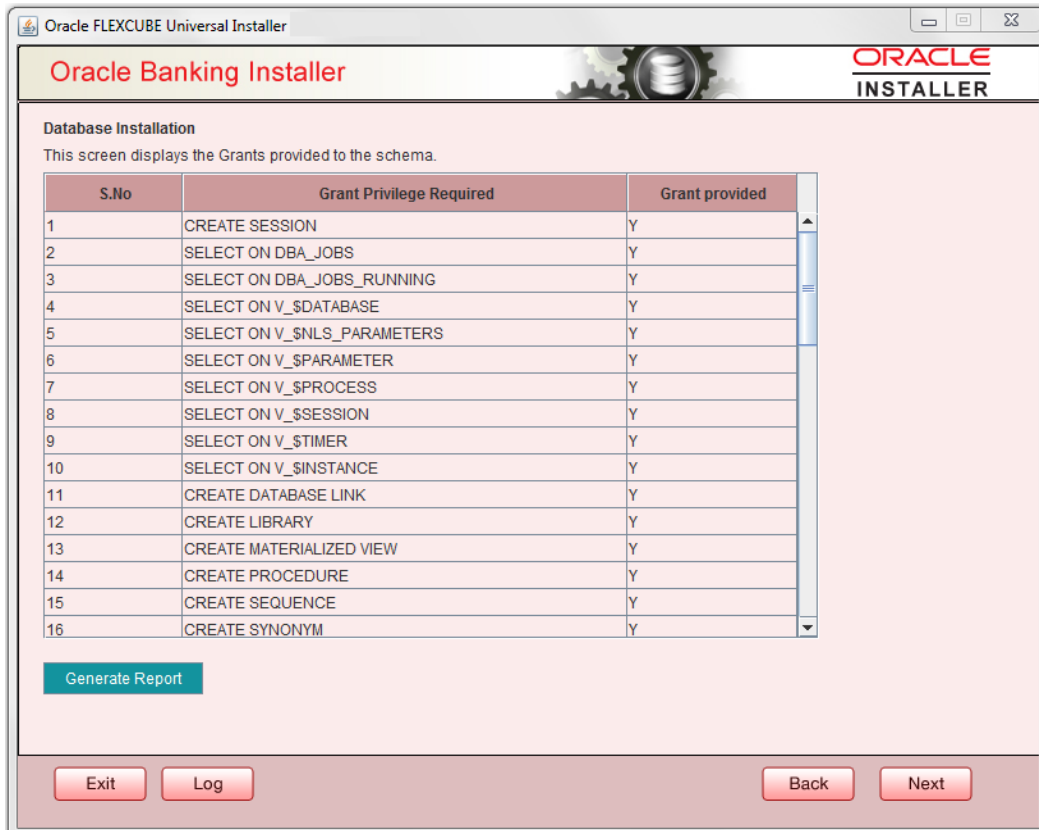
- Click on 'Test Connection' button. After Successful connection click on 'Next' button to proceed and below Screen occurs. This Screen displays database parameters listed in v\$parameter table.

This page is Read only used as reference to know the database parameters.

The screenshot shows the Oracle Banking Installer window. The title bar reads "Oracle FLEXCUBE Universal Installer". The main window has a header with "Oracle Banking Installer" on the left and the "ORACLE INSTALLER" logo on the right. Below the header, the text "Database Installation" is displayed, followed by the instruction: "This screen displays the parameters to be configured in v\$parameter table." A table with four columns (S.No, Parameter, Current Value, Expected Value) lists 19 database parameters. At the bottom of the window, there are four buttons: "Exit", "Log", "Back", and "Next".

S.No	Parameter	Current Value	Expected Value
1	_optimizer_connect_by_cost_based		FALSE
2	_allow_level_without_connect_by		TRUE
3	_unnest_subquery		FALSE
4	_hash_join_enabled		FALSE
5	ALWAYS_SEMI_JOIN		NESTED_LOOPS
6	_optimizer_cost_based_transformation		off
7	audit_trail	DB	NONE
8	blank_trimming	FALSE	TRUE
9	cursor_sharing	EXACT	FORCE
10	cursor_space_for_time	FALSE	FALSE
11	nls_date_format		DD-MON-RRRR
12	optimizer_index_caching	0	90
13	optimizer_index_cost_adj	100	50
14	optimizer_mode	ALL_ROWS	ALL_ROWS
15	parallel_adaptive_multi_user	TRUE	FALSE
16	parallel_automatic_tuning	FALSE	FALSE
17	db_block_size	8192	8192
18	plsql_optimize_level	2	2
19	skip_unusable_indexes	TRUE	FALSE

- Click on 'Next' Button. This screen displays the grants provided to the schema. If object compilation is required and the privilege is not given, then you can find that out from this screen.



- Click 'Generate Report' button, the installer creates an SQL file 'grantScript.sql' containing the script for granting the privileges in the 'Logs' folder and the following screen is displayed

You can use this file to get the access.



Only the sys user can execute the file 'grantScript.sql' for granting privileges.

- Click 'Next' and the following screen is displayed:

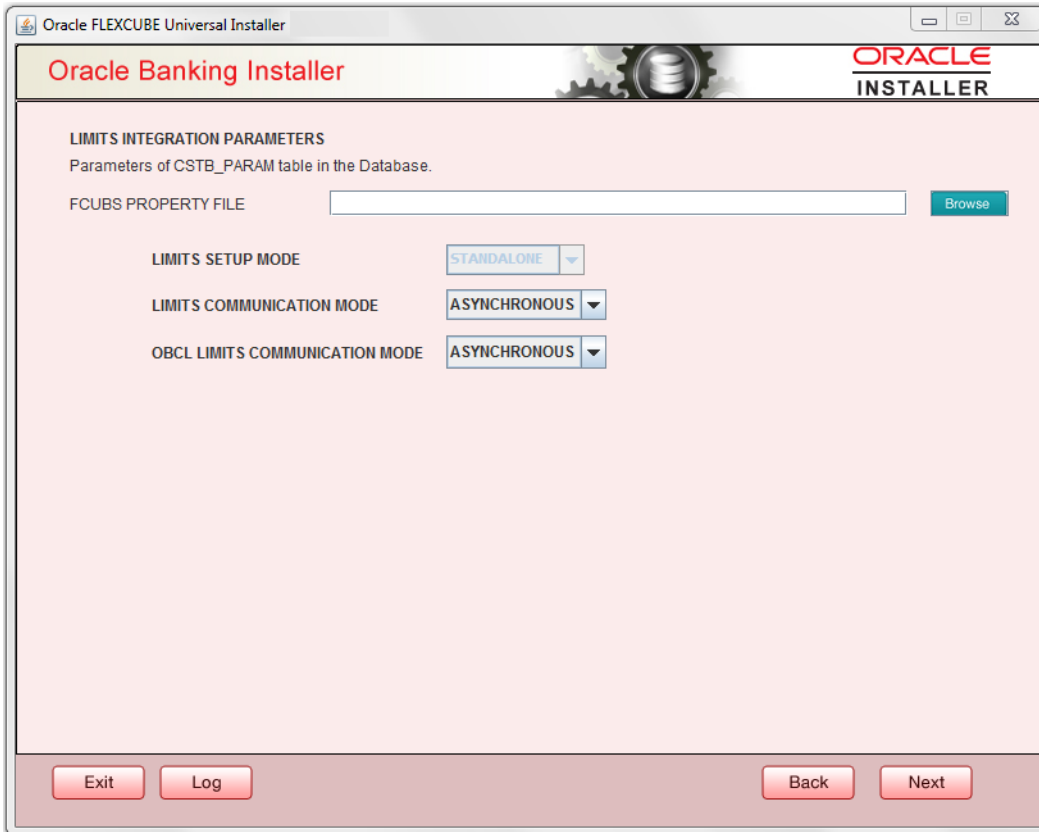


- Screen displays basic setup details for table 'CSTB_PARAM'.

Here Oracle directory name must be added for WORK_AREA and TRACE_AREA. Oracle directory name must be added for other required parameters also.

Please refer Section 12. Oracle Directory Usage Recommendation in *FCUBS_Database_Practices* manual for details on maintaining the necessary Oracle directories.

- Click on 'Next' button to display Limits integration Parameters Screen as shown below:

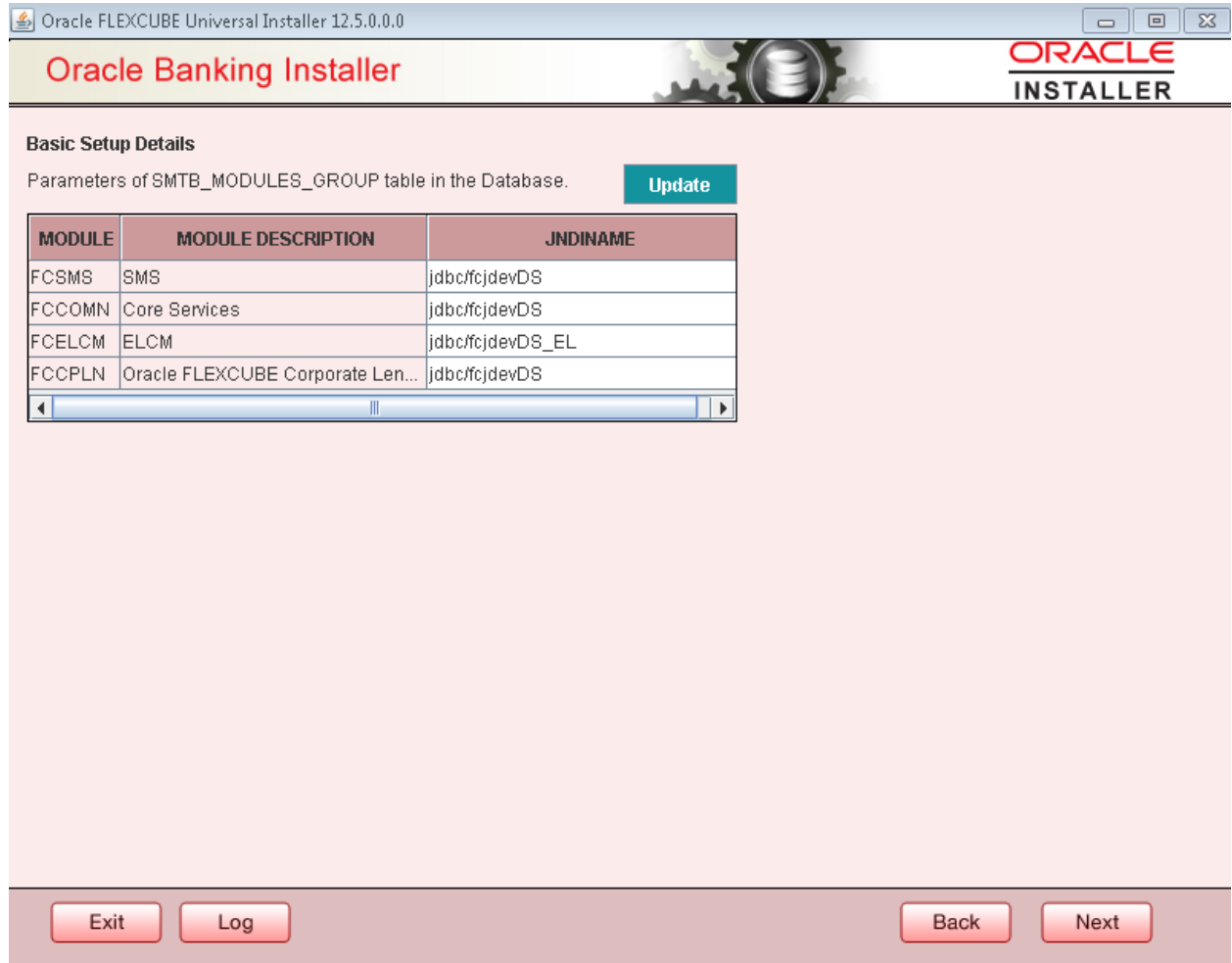


Limits Integration Parameters will be set based on values read from fcubs.properties file browsed. In case of ELCM Embedded, Limit Communication mode will be Asynchronous by default. These parameters will be updated in CSTB_PARAM table.

10. Click on 'Next' button .Screen displays parameters for table SMTB_MODULES_GROUP

If any change is required in the JNDI name, edit the same and click on Update.

Note: SMTB_MODULES_GROUP for FCELCM (Oracle ELCM) with the JNDI name '<ENTITY_ID JNDI name>_EL'. For example, if the ENTITY_ID JNDI name is 'jdbc/fcdevDS', then you need to update JNDI name 'jdbc/fcdevDS_EL'.



11. Click 'Next'. The following screen is displayed.

The screenshot shows the Oracle Banking Installer window. The title bar reads "Oracle FLEXCUBE Universal Installer". The window header contains "Oracle Banking Installer" on the left and the "ORACLE INSTALLER" logo on the right. The main content area is titled "Basic Setup Details" and "Basic Details for bank and branch". It contains the following fields:

Bank Code	CH0
Bank Name	City Head Office
Branch Code	001
Country Code	
Country Description	
Cheque Number Mask	NNNN
Host Code	HOST1
Process Deployment	BPEL
TimeZone	Asia/Calcutta

At the bottom of the window, there are four buttons: "Exit", "Log", "Back", and "Next".

Screen displays basic setup details for bank and branch

Bank Code

Enter the bank code.

Bank Name

Enter the bank name.

Branch Code

Enter the branch code.

Country Code

Enter the Country code.

Country Description

Enter the Country Description.

Cheque Number Mask

Enter the Cheque Number Mask

Process Deployment

Choose mode of process deployment between BPEL or BPMN

12. Click 'Next'. The following screen is displayed.

Oracle FLEXCUBE Universal Installer

Oracle Banking Installer

ORACLE
INSTALLER

Basic Setup Details

Basic details about dates. The Date Format must be yyyy/mm/dd.

Input Date

Current Business Date

Previous Business Date

Next Business Date

Next To Next Business Date

Exit Log Back Next

13. Screen displays basic setup details for dates.

Input Date

Enter the input date.

Current Business Date

Enter the current business date.

Previous Business Date

Enter the previous business date.

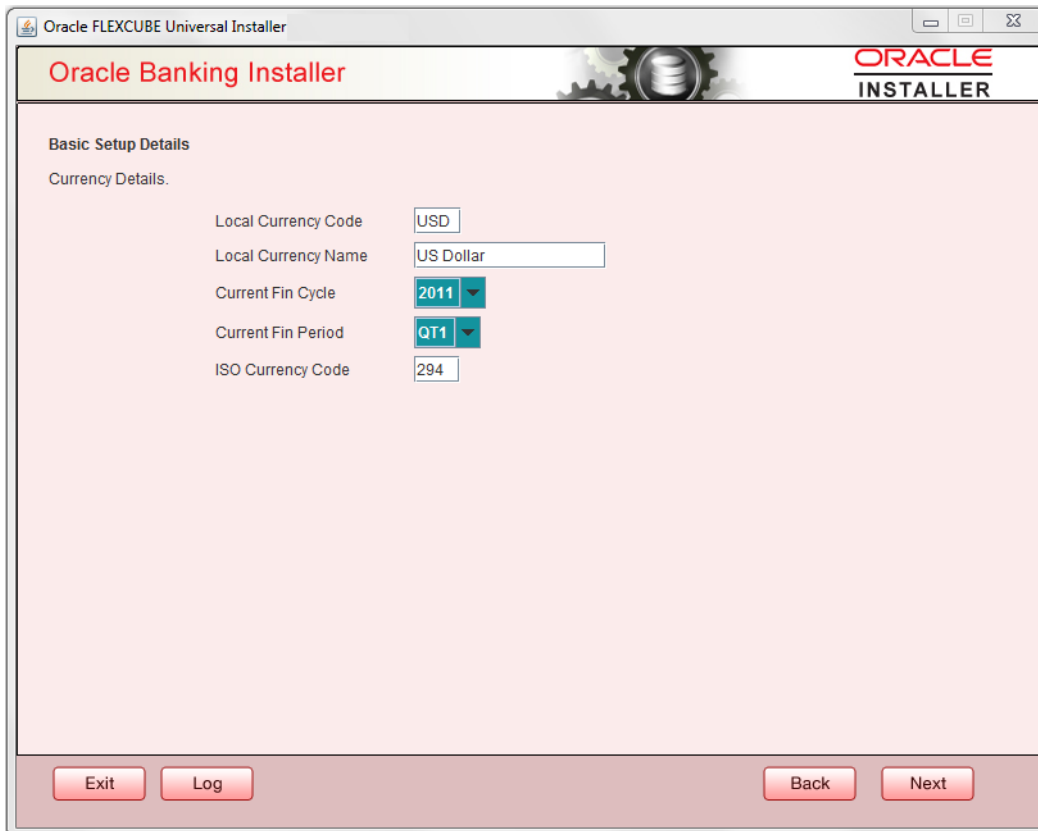
Next Business Date

Enter the next business date.

Next to Next Business Date

Enter the next to next business date.

14. Click 'Next'. The following screen is displayed.



Screen displays basic setup details for currency, User can change them.

Local Currency Code

Enter Local Currency Code

Local Currency Name

Enter Local Currency Name

Current Fin Cycle

Enter Current Financial Cycle (any year from 2011 to 2050)

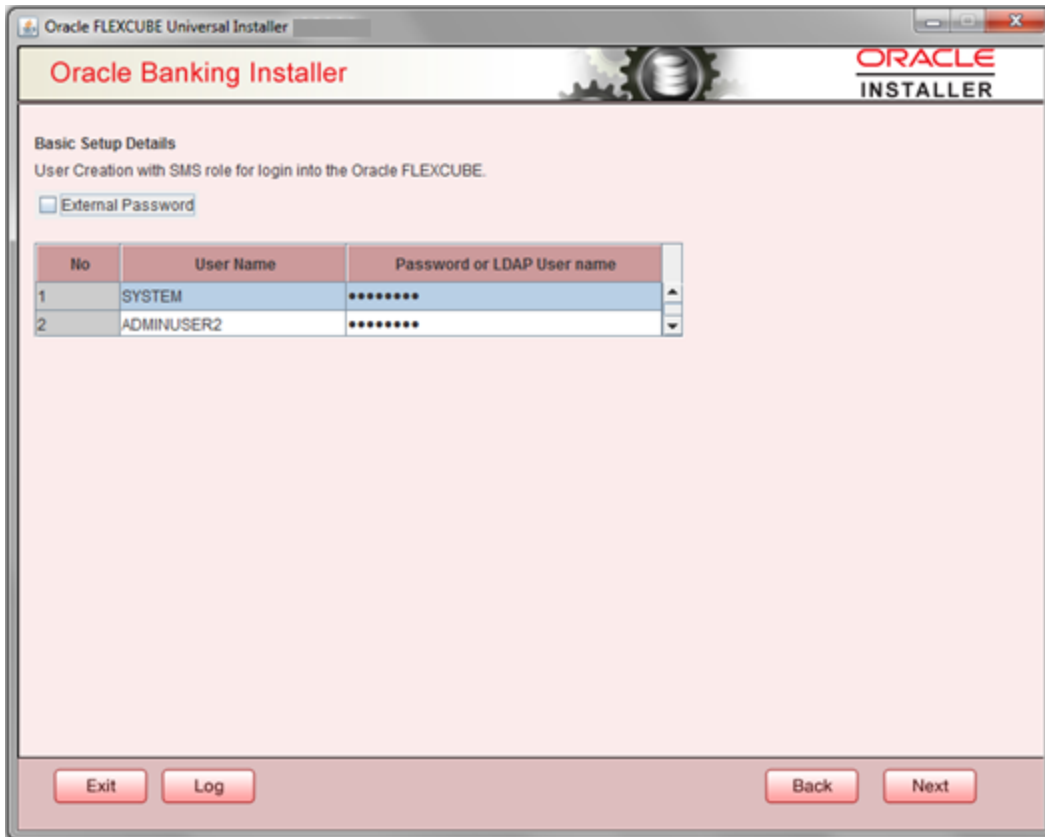
Current Fin Period

Enter Current Financial Period (QT1 to QT4, M01 to M12)

ISO Currency Code

Enter ISO Currency Code.

15. Click 'Next' and the following screen is displayed:



Screen displays basic setup details for the creating a user in FLEXCUBE.

Creation of 'SYSTEM' user is mandatory for payments processing, it needs to be created as part of static data setup.

External Password

Check this box to specify the external password.

User Name

Displays the user name. Change the user name if required.

Password or LDAP User Name

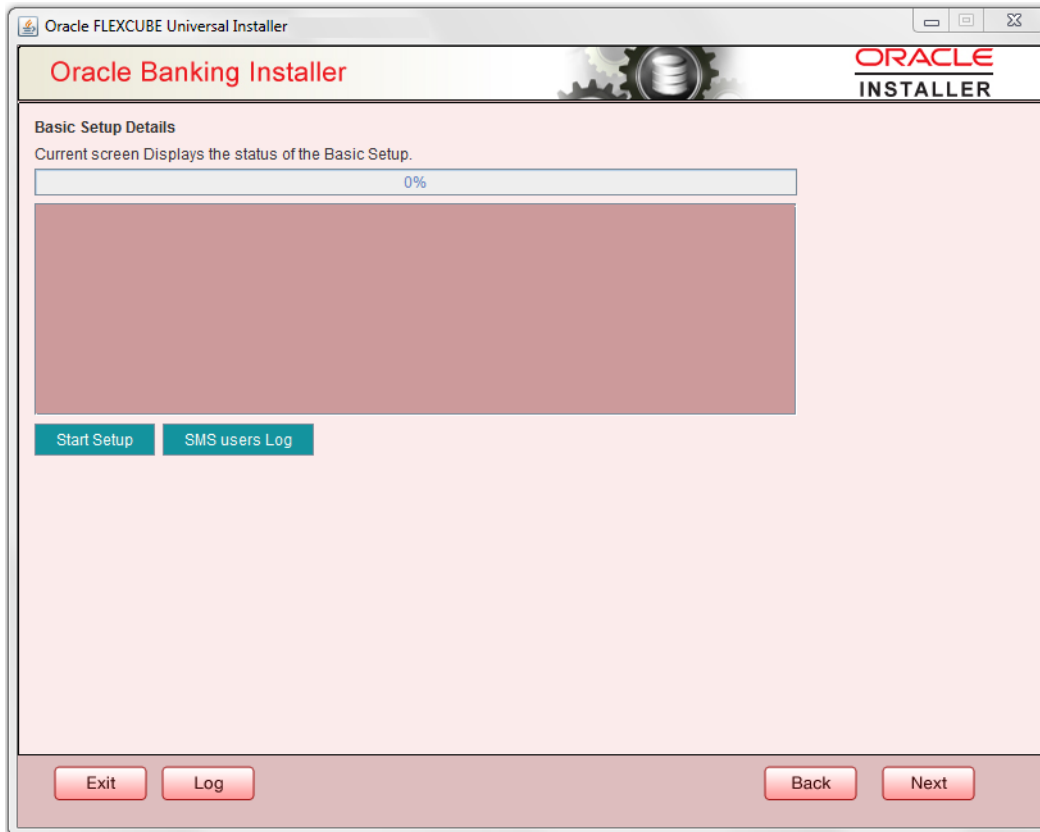
Specify the password and it is mandatory. You can use the following characters in the password:

- Alphabets in uppercase
- Alphabets in lowercase
- Numerals

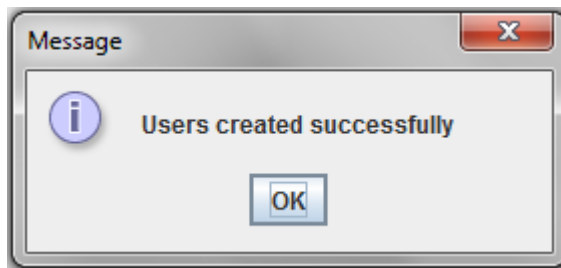
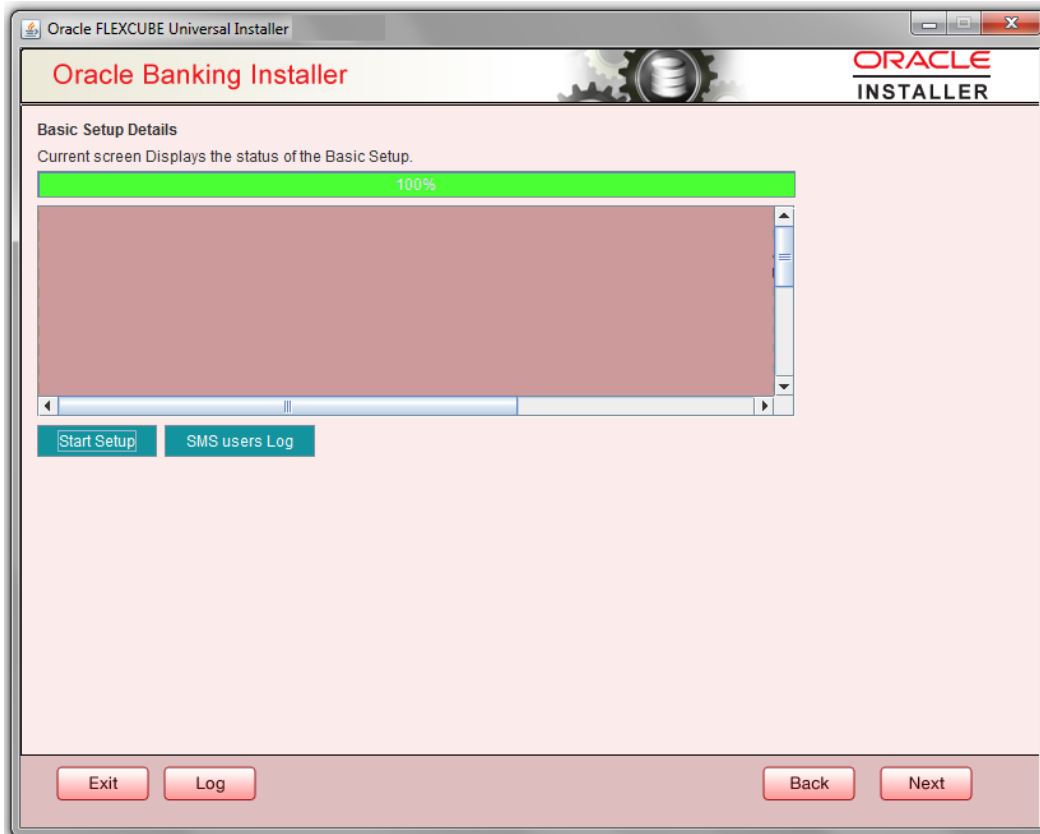


You cannot use '_' (underscore) in the password.

16. Click 'Next' and the following screen is displayed:



17. Click 'Start Setup' button to compile the entries. On completion the below Screen will be seen.
User created logs can be viewed by clicking SMS uses Log button.



This completes the basic setup process.



Installer Database Setup
[February] [2018]
Version 14.0.0.0.0

Oracle Financial Services Software Limited
Oracle Park
Off Western Express Highway
Goregaon (East)
Mumbai, Maharashtra 400 063
India

Worldwide Inquiries:
Phone: +91 22 6718 3000
Fax: +91 22 6718 3001
<https://www.oracle.com/industries/financial-services/index.html>

Copyright © [2007], [2018], Oracle and/or its affiliates. All rights reserved.

Oracle and Java are registered trademarks of Oracle and/or its affiliates. Other names may be trademarks of their respective owners.

U.S. GOVERNMENT END USERS: Oracle programs, including any operating system, integrated software, any programs installed on the hardware, and/or documentation, delivered to U.S. Government end users are "commercial computer software" pursuant to the applicable Federal Acquisition Regulation and agency-specific supplemental regulations. As such, use, duplication, disclosure, modification, and adaptation of the programs, including any operating system, integrated software, any programs installed on the hardware, and/or documentation, shall be subject to license terms and license restrictions applicable to the programs. No other rights are granted to the U.S. Government.

This software or hardware is developed for general use in a variety of information management applications. It is not developed or intended for use in any inherently dangerous applications, including applications that may create a risk of personal injury. If you use this software or hardware in dangerous applications, then you shall be responsible to take all appropriate failsafe, backup, redundancy, and other measures to ensure its safe use. Oracle Corporation and its affiliates disclaim any liability for any damages caused by use of this software or hardware in dangerous applications.

This software and related documentation are provided under a license agreement containing restrictions on use and disclosure and are protected by intellectual property laws. Except as expressly permitted in your license agreement or allowed by law, you may not use, copy, reproduce, translate, broadcast, modify, license, transmit, distribute, exhibit, perform, publish or display any part, in any form, or by any means. Reverse engineering, disassembly, or decompilation of this software, unless required by law for interoperability, is prohibited.

The information contained herein is subject to change without notice and is not warranted to be error-free. If you find any errors, please report them to us in writing.

This software or hardware and documentation may provide access to or information on content, products and services from third parties. Oracle Corporation and its affiliates are not responsible for and expressly disclaim all warranties of any kind with respect to third-party content, products, and services. Oracle Corporation and its affiliates will not be responsible for any loss, costs, or damages incurred due to your access to or use of third-party content, products, or services.